
Comparative Study

— By: Leslie Sandoval —

My comparative study focuses on analyzing and comparing two different artists and a total of four different artworks. These artists and their works have similar intentions in portraying what they express; I will also be comparing and contrasting my artwork with the artwork of Julie Roth and Frida Kahlo. I will be comparing *The Two Fridas*, *The Broken Column and Diego and I* by Frida Kahlo with *Apocalyptic I*, *Apocalyptic II*, and *City Girl 1* by Julie Roth and my artwork. All artwork is conceptual, meaning that the meaning and idea of the artworks is more important than the paintings itself.

Evaluation of Cultural Significance of Kahlo

Frida Kahlo is a famous Mexican artist known world wide. Kahlo's career began in the late 1920's due to her tragic accident on a bus ride home that fractured most of her body. According to John Morrison, "As horrible as the accident was, it induced Frida to start painting as a form of therapy. Her mother rigged up a mirror on Frida's four-poster bed so she could paint while laying down." Her art mostly features realism and surrealism of sequenced events of her life, that includes her passionate and dysfunctional relationship with the famous mural artist, Diego Rivera in which he is portrayed in most of her art. Kahlo illustrates in her paintings the pain she has endured throughout her life, including emotional, traumatic and physical pain. Frida Kahlo had a major impact in the movement, surrealism since she is a an exemplary figure of the surrealistic period.



“Frida Kahlo Paintings, Biography and Quotes.” Frida Kahlo Organization.
<http://www.fridakahlo.org/>

Evaluation of Cultural Significance of Kahlo

Frida met Diego Rivera at a really young age, before and after her accident. Diego was a lot older but they made their relationship work and soon got married. Rivera cheated on Kahlo frequently, while Frida was aware of it. Instead of being sad, she did the same as him. Rivera crossed the line when he slept with Frida's sister, Kahlo couldn't take it any longer and left him and then married him again a year later. They lived happily, but it was in the time when she was divorced when she created her most famous paintings. Rivera and the pain he inflicted to Kahlo through cheating, rumors, priorities and miscommunication was the inspiration she had to create paintings that are now famous world wide.



<https://goo.gl/images/GUQZfr>

Interpretation of Function and Purpose

Annotation of *The Two Fridas* by Frida Kahlo

The hearts are surrealistic and symbolic, depicting her heartbreak. The hearts are connected because there are two different Frida's, the one that she used to be for Diego and the one she is now without him. Frida has scissors because the new her, is breaking the ties with her old self that used to put Diego first for everything.

The white in mexican culture means pure. This makes her clothing stand out and, and is a mexican traditional garment.



Kahlo creates a dark background that contrasts with her self-portrait.

She wears clothes for a daily basis, which is a light brown that decreases its center of attention with a blue and orange blouse that stands out.

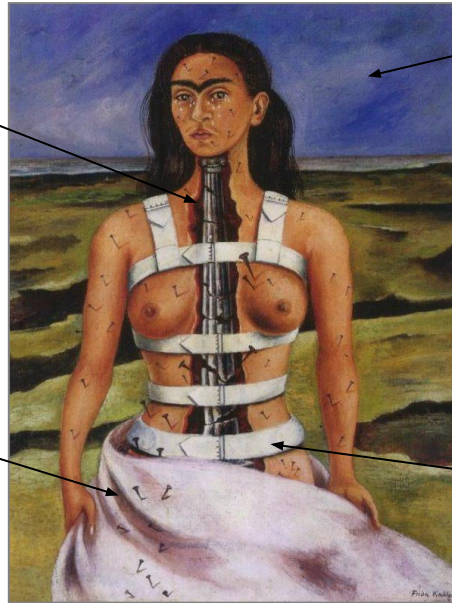
“Frida Kahlo Paintings, Biography and Quotes.” Frida Kahlo Organization. <http://www.fridakahlo.org/>

Interpretation of Function and Purpose

Annotation of *The Broken Column* by Frida Kahlo

Her spinal cord is depicted as a broken column, since her accident damaged her spinal cord and had to use a body cast for months.

Kahlo paints a garment over her, creating contrast over her skin tone and background because she wanted to make a statement.



Kahlo creates a dark blue background that contrasts with her self-portrait. It is believed she did this because blue often means sad, and in the painting, she is crying.

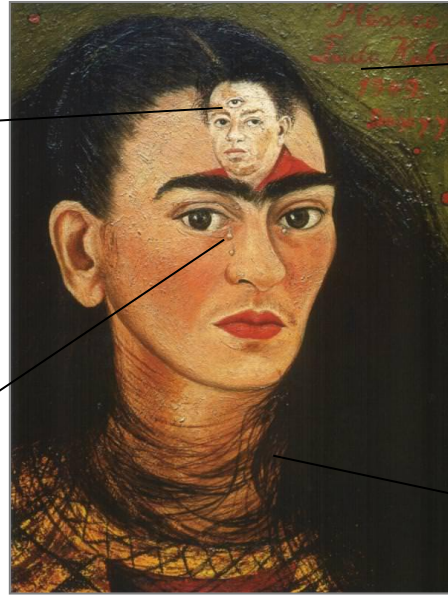
The white stripes on her body are the cast that she had all over the body, which is white and contrasts all the colors over her body and background.

“Frida Kahlo Paintings, Biography and Quotes.” Frida Kahlo Organization. <http://www.fridakahlo.org/>

Interpretation of Function and Purpose

Annotation of *Diego and I* by Frida Kahlo

The eye on Diego Rivera's forehead has major significance because that was all she thought about, Diego Rivera. Also, she created a pyramid of five eyes, which can mean the illuminati or the U.S secret services.



It says, "México, Frida Kahlo, 1949, Diego y yo." Kahlo most of the time wrote on her paintings with phrases or the title and date.

The tear symbolizes the pain her lover causes just by thinking about him, that is why she placed him on her forehead.

Her hair around her neck, symbolizes that the pain without Diego is like strains around her neck or suffocation.

"Frida Kahlo Paintings, Biography and Quotes." Frida Kahlo Organization. <http://www.fridakahlo.org/>

Analysis of Formal Qualities of Kahlo

Kahlo's use of symbolism and surrealism creates a powerful message on what she lived through.

In Frida Kahlo's, *The Broken Column* she illustrates the pain she went through and how that accident impacted her and her life.

In Frida Kahlo's, *The Two Fridas* she illustrates heartbreak and surrealism.

In Frida Kahlo's, *Diego and I* Frida Kahlo illustrates heartbreak, surrealism and headache.



<https://goo.gl/images/DZmVRg>

Evaluation of Cultural Significance of Julie Roth

In her website, Julie Roth stated that she is a professional freelance illustrator and graduate from the Milwaukee Institute of Art & Design (MIAD), she utilizes a few artistic disciplines with a center on utilizing a traditional 2D media such as oil, ink, and watercolor.

She was born in Milwaukee, WI. She is inspired by nature, the city and the of dichotomy of man's persistent influence on the world. Roth's passion lies in creating visionaries by combining the human form, architecture, and landscapes to produce a basic statement about the impacts of our



Roth, Julie. *Julie Roth Illustration & Design*, www.rothillustration.com/.

Interpretation of Function and Purpose

Annotation of *Apocalyptica I* by Julie Roth

The metallic people symbolize the people in today's world function and how they work like robots.

The water symbolizes droughts, global warming and natural disasters because of the colors, contrast and shades.



That is a building, a corporation that manufactures goods to help people, but to harm the environment.

Metalic people are holding up the bridge, symbolizing them as the backbone of the city.

Roth, Julie. *Julie Roth Illustration & Design*, www.rothillustration.com/.

Interpretation of Function and Purpose

Annotation of *Apocalyptica II* by Julie Roth

The water wheel connects it to the problems she has are all around the city.



This symbolizes a devastation in ruins, it can be interpreted as in global warming, twin towers or personal problems.

Her face is down, symbolizing pain that world brings on her.

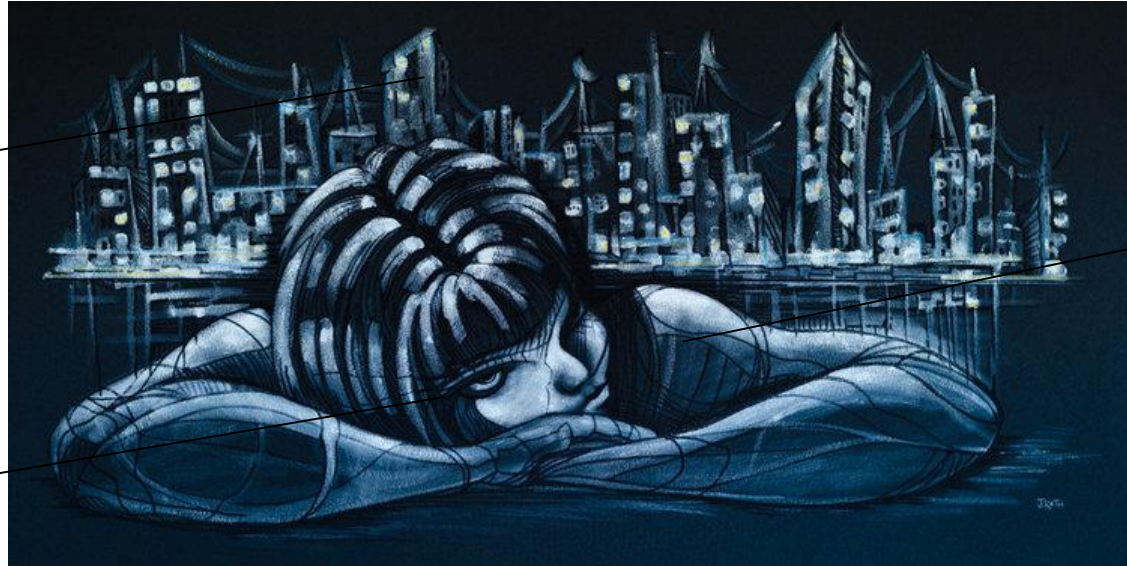
Her body symbolizes a lot of pressure and pain on her head, back and shoulders.

Roth, Julie. *Julie Roth Illustration & Design*, www.rothillustration.com/.

Interpretation of Function and Purpose

Annotation of *City Girl 1* by Julie Roth

The buildings are all connected symbolizing unity.



Hair or cuts on her body symbolize suffocation and strains.

Her eyes are dark and looking into space depicting one's thoughts.

Roth, Julie. *Julie Roth Illustration & Design*, www.rothillustration.com/.

Analysis of Formal Qualities of Roth

Roth's use of symbolism creates powerful messages that are about her person, anyone's wellbeing and global problems.

In *Apocalyptica I* Roth uses humans appear as robots and the pain they undergo seeing and building the country but also seeing it being destroyed due to war and anything the audience would like to interpret as.

In *Apocalyptica II* Roth a woman is carrying the burden of a city or the country and has so much in her shoulders. It depicts how undergoing responsibility brings pain.

In *City Girl 1* Roth makes the painting appear as if the young girl is carrying the city on her back and the roots of it are tied and all around her body, suffocating her and seeming strained from the city.

Roth uses cold, dark colors to show meaning.



Roth, Julie. *Julie Roth Illustration & Design*,
www.rothillustration.com/.

Comparing Artistic Styles

Kahlo

- Has more of a variety of colors
- Focuses on the emotions she is feeling
- She was deeply influenced by indigenous Mexican culture
- She used oil paint
- Meaning is about her life



“Frida Kahlo Paintings, Biography and Quotes.”
Frida Kahlo Organization.
<http://www.fridakahlo.org/>

Roth

- Uses similar dark greyish tones
- Focuses on reality and emotions
- She was influenced by MC Escher, Salvador Dali and Hieronymus Bosch.
- She uses India ink
- Meaning is about environmental issues



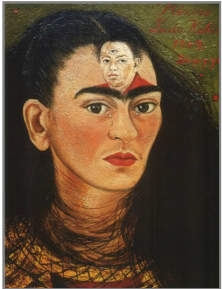
Roth, Julie.
*Julie Roth
Illustration
& Design,*
www.rothillustration.com/

Both of them express their emotions, use surrealism, use more than five tones on each painting and their work comes in all proportions.

Comparing Artistic Styles

Kahlo

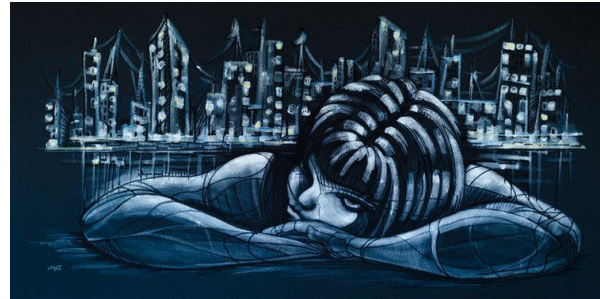
- She paints self portraits.
- She paints and expresses how she is feeling.
- She is a surrealist and a realist.
- Her painting is personal.



“Frida Kahlo Paintings, Biography and Quotes.” Frida Kahlo Organization.
<http://www.fridakahlo.org/>

Roth

- She paints panoramas.
- Paints problems of the city.
- She is a realist.
- Meaning is about society and world issues

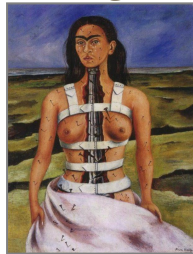


Roth, Julie. *Julie Roth Illustration & Design*, www.rothillustration.com/.

Comparing Use of Emotion

Kahlo

- In *The Two Fridas*, Kahlo makes the audience feel the heartbreak she is going through by illustrating a broken heart, cut veins and change of wardrobe.
- In *The Broken Column*, Kahlo expresses her pain of hopelessness due to her accident.
- In *Diego and I*, Kahlo expresses the pain she undergoes day by day just by thinking about her lover, Diego Rivera.



Both of them express immense pain. They're paintings are all about pain.

“Frida Kahlo Paintings, Biography and Quotes.” Frida Kahlo Organization. <http://www.fridakahlo.org/>

Roth

- In *Apocalyptic I*, Roth expresses the sadness the people who built and hold the city together by seeing it get destroyed.
- In *Apocalyptic II*, Roth expresses the burden the Statue of Liberty goes through because of this countries problems in environmental and political matters.
- In *City Girl 1*, Roth expresses the pain the young girl has by holding the roots of the city in her back.



Roth, Julie. *Julie Roth Illustration & Design*, www.rothillustration.com/.

Links

Roth, Julie. *Julie Roth Illustration & Design*, www.rothillustration.com/.

“Frida Kahlo Paintings, Biography and Quotes.” Frida Kahlo Organization. <http://www.fridakahlo.org/>

Kettenmann, Andrea. *Frida Kahlo: Pain and Passion*. Los Angeles: Taschen, 2008.

Levine, Barbara, and Stephen Jaycox. *Finding Frida Kahlo: an unexpected archive*. New York: Princeton Architectural Press, 2009.

Morrison, John. *The Great Hispanic Heritage: Frida Kahlo*. New York: Chelsea House, 2003.

Pérez Alonso, Leticia. "Frida Kahlo and the Improper/Unclean: Toward the Condition of Abjection." *Women's Studies* 43, no. 4 (May 2014): 407-424. *Academic Search Premier*, EBSCOhost (accessed January 11, 2017).

Reis, Levilson C. "Paratexts to Frida Kahlo's Oeuvre: The Relationship between the Visual and the Textual, the Self and the Other, from the Self-Portraits to the Diary Entries." *Forum For Modern Language Studies* 48, no. 1 (January 2012): 99-111. *Academic Search Premier*, EBSCOhost (accessed January 11, 2017).

“The Life and Times of Frida Kahlo.” PBS Organization. <http://www.pbs.org/weta/fridakahlo/life/>