

---

---

# Comparative Study

— By: Leslie Sandoval —

---

---

My comparative study focuses on analyzing and comparing two different artists and a total of four different artworks. These artists and their works have similar intentions in portraying what they express; I will also be comparing and contrasting my artwork with the artwork of Julie Roth and Frida Kahlo. I will be comparing *The Two Fridas*, *The Broken Column and Diego and I* by Frida Kahlo with *Apocalyptic I*, *Apocalyptic II*, and *City Girl 1* by Julie Roth and my artwork. All artwork is conceptual, meaning that the meaning and idea of the artworks is more important than the paintings itself.

# Evaluation of Cultural Significance of Kahlo

Frida Kahlo is a famous Mexican artist known world wide. Kahlo's career began in the late 1920's due to her tragic accident on a bus ride home that fractured most of her body. According to John Morrison, "As horrible as the accident was, it induced Frida to start painting as a form of therapy. Her mother rigged up a mirror on Frida's four-poster bed so she could paint while laying down." Her art mostly features realism and surrealism of sequenced events of her life, that includes her passionate and dysfunctional relationship with the famous mural artist, Diego Rivera in which he is portrayed in most of her art. Kahlo illustrates in her paintings the pain she has endured throughout her life, including emotional, traumatic and physical pain. Frida Kahlo had a major impact in the movement, surrealism since she is a an exemplary figure of the surrealist period.

# Evaluation of Cultural Significance of Kahlo

Frida met Diego Rivera at a really young age, before and after her accident. Diego was a lot older but they made their relationship work and soon got married. Rivera cheated on Kahlo frequently, while Frida was aware of it. Instead of being sad, she did the same as him. Rivera crossed the line when he slept with Frida's sister, Kahlo couldn't take it any longer and left him and then married him again a year later. They lived happily, but it was in the time when she was divorced when she created her most famous paintings. Rivera and the pain he inflicted to Kahlo through cheating, rumors, priorities and miscommunication was the inspiration she had to create paintings that are now famous world wide.

# Interpretation of Function and Purpose

## Annotation of *The Two Fridas* by Frida Kahlo

The hearts are surrealistic and symbolic, depicting her heartbreak. The hearts are connected because there are two different Frida's, the one that she used to be for Diego and the one she is now without him. Frida has scissors because the new her, is breaking the ties with her old self that used to put Diego first for everything.

The white in mexican culture means pure. This makes her clothing stand out and, and is a mexican traditional garment.



Kahlo creates a dark background that contrasts with her self-portrait.

She wears clothes for a daily basis, which is a light brown that decreases its center of attention with a blue and orange blouse that stands out.

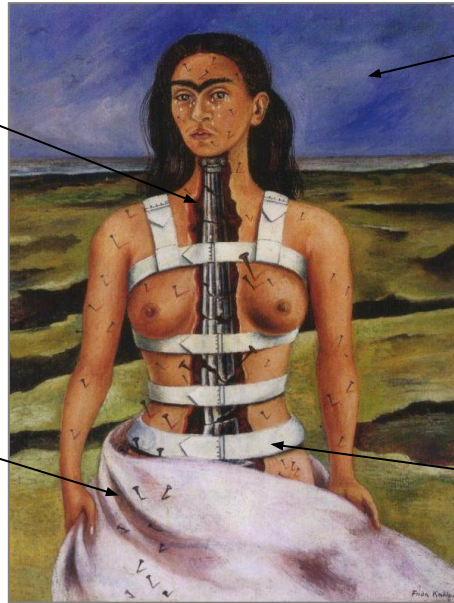
“Frida Kahlo Paintings, Biography and Quotes.” Frida Kahlo Organization. <http://www.fridakahlo.org/>

# Interpretation of Function and Purpose

Annotation of *The Broken Column* by Frida Kahlo

Her spinal cord is depicted as a broken column, since her accident damaged her spinal cord and had to use a body cast for months.

Kahlo paints a garment over her, creating contrast over her skin tone and background because she wanted to make a statement.



Kahlo creates a dark blue background that contrasts with her self-portrait. It is believed she did this because blue often means sad, and in the painting, she is crying.

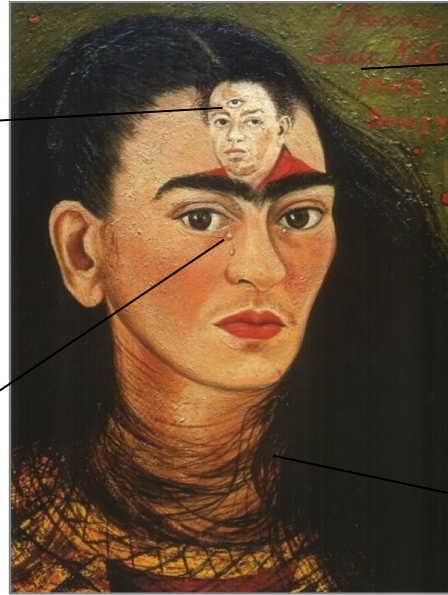
The white stripes on her body are the cast that she had all over the body, which is white and contrasts all the colors over her body and background.

“Frida Kahlo Paintings, Biography and Quotes.” Frida Kahlo Organization. <http://www.fridakahlo.org/>

# Interpretation of Function and Purpose

Annotation of *Diego and I* by Frida Kahlo

The eye on Diego Rivera's forehead has major significance because that was all she thought about, Diego Rivera. Also, she created a pyramid of five eyes, which can mean the illuminati or the U.S secret services.



It says, "México, Frida Kahlo, 1949, Diego y yo." Kahlo most of the time wrote on her paintings with phrases or the title and date.

The tear symbolizes the pain her lover causes just by thinking about him, that is why she placed him on her forehead.

Her hair around her neck, symbolizes that the pain without Diego is like strains around her neck or suffocation.

"Frida Kahlo Paintings, Biography and Quotes." Frida Kahlo Organization. <http://www.fridakahlo.org/>

# Analysis of Formal Qualities of Kahlo

Kahlo's use of symbolism and surrealism creates a powerful message on what she lived through.

In Frida Kahlo's, *The Broken Column* she illustrates the pain she went through and how that accident impacted her and her life.

In Frida Kahlo's, *The Two Fridas* she illustrates heartbreak and surrealism.

In Frida Kahlo's, *Diego and I* Frida Kahlo illustrates heartbreak, surrealism and headache.

# Evaluation of Cultural Significance of Julie Roth

In her website, Julie Roth stated that she is a professional freelance illustrator and graduate from the Milwaukee Institute of Art & Design (MIAD), she utilizes a few artistic disciplines with a center on utilizing a traditional 2D media such as oil, ink, and watercolor.

She was born in Milwaukee, WI. She is inspired by nature, the city and the of dichotomy of man's persistent influence on the world. Roth's passion lies in creating visionaries by combining the human form, architecture, and landscapes to produce a basic statement about the impacts of our decisions.



# Interpretation of Function and Purpose

Annotation of *Apocalyptica I* by Julie Roth

The metallic people symbolize the people in today's world function and how they work like robots.

The water symbolizes droughts, global warming and natural disasters because of the colors, contrast and shades.



That is a building, a corporation that manufactures goods to help people, but to harm the environment.

Metalic people are holding up the bridge, symbolizing them as the backbone of the city.

Roth, Julie. *Julie Roth Illustration & Design*, [www.rothillustration.com/](http://www.rothillustration.com/).

# Interpretation of Function and Purpose

Annotation of *Apocalyptica II* by Julie Roth

The water wheel connects it to the problems she has are all around the city.



This symbolizes a devastation in ruins, it can be interpreted as in global warming, twin towers or personal problems.

Her body symbolizes a lot of pressure and pain on her head, back and shoulders.

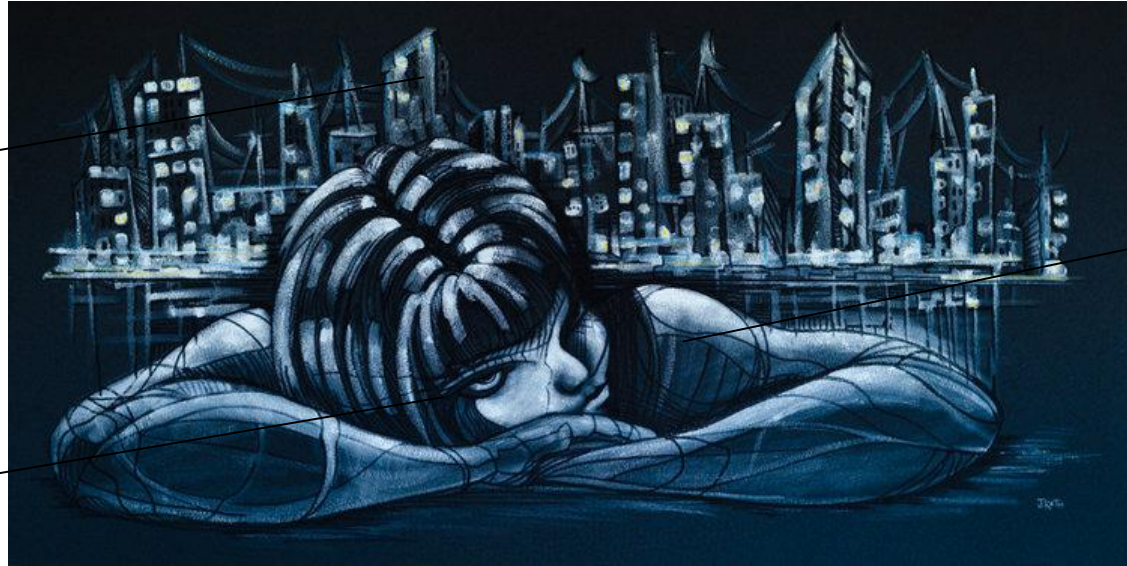
Her face is down, symbolizing pain that world brings on her.

Roth, Julie. *Julie Roth Illustration & Design*, [www.rothillustration.com/](http://www.rothillustration.com/).

# Interpretation of Function and Purpose

Annotation of *City Girl 1* by Julie Roth

The buildings are all connected symbolizing unity.



Hair or cuts on her body symbolize suffocation and strains.

Her eyes are dark and looking into space depicting one's thoughts.

Roth, Julie. *Julie Roth Illustration & Design*, [www.rothillustration.com/](http://www.rothillustration.com/).

# Analysis of Formal Qualities of Roth

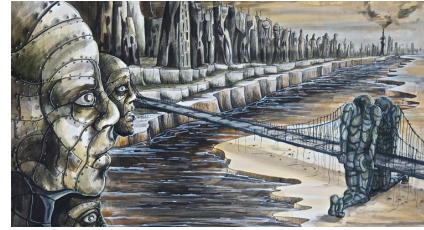
Roth's use of symbolism creates powerful messages that are about her person, anyone's wellbeing and global problems.

In *Apocalyptica I* Roth uses humans appear as robots and the pain they undergo seeing and building the country but also seeing it being destroyed due to war and anything the audience would like to interpret as.

In *Apocalyptica II* Roth a woman is carrying the burden of a city or the country and has so much in her shoulders. It depicts how undergoing responsibility brings pain.

In *City Girl 1* Roth makes the painting appear as if the young girl is carrying the city on her back and the roots of it are tied and all around her body, suffocating her and seeming strained from the city.

Roth uses cold, dark colors to show meaning.

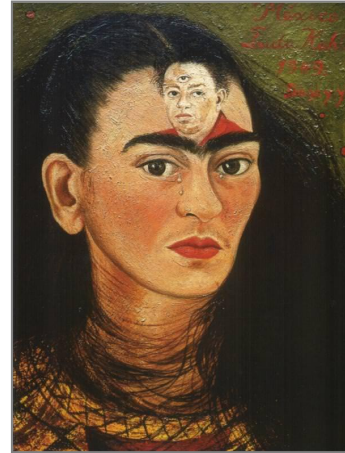


Roth, Julie. *Julie Roth Illustration & Design*,  
[www.rothillustration.com/](http://www.rothillustration.com/).

# Comparing Artistic Style



*The Two Fridas* by Frida Kahlo



*Diego and I* by Frida Kahlo

# Comparing Artistic Style



*City Girl 1*



*Apocalyptica I* by Julie Roth

# Comparing Artistic Styles

## Kahlo

- Has more of a variety of colors
- Focuses on the emotions she is feeling
- She was deeply influenced by indigenous Mexican culture
- She used oil paint
- Meaning is about her life



“Frida Kahlo Paintings, Biography and Quotes.”  
Frida Kahlo Organization.  
<http://www.fridakahlo.org/>

## Roth

- Uses similar dark greyish tones
- Focuses on reality and emotions
- She was influenced by MC Escher, Salvador Dali and Hieronymus Bosch.
- She uses India ink
- Meaning is about environmental issues



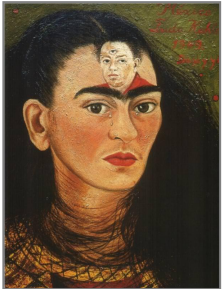
Roth, Julie.  
*Julie Roth  
Illustration  
& Design,*  
[www.rothillustration.com/](http://www.rothillustration.com/)

Both of them express their emotions, use surrealism, use more than five tones on each painting and their work comes in all proportions.

# Comparing Artistic Styles

## Kahlo

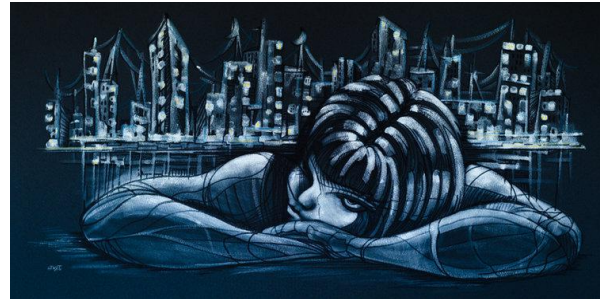
- She paints self portraits.
- She paints and expresses how she is feeling.
- She is a surrealist and a realist.
- Her painting is personal.



“Frida Kahlo Paintings, Biography and Quotes.” Frida Kahlo Organization.  
<http://www.fridakahlo.org/>

## Roth

- She paints panoramas.
- Paints problems of the city.
- She is a realist.
- Meaning is about society and world issues



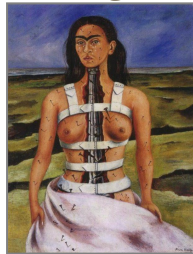
Roth, Julie. *Julie Roth Illustration & Design*, [www.rothillustration.com/](http://www.rothillustration.com/).



# Comparing Use of Emotion

## Kahlo

- In *The Two Fridas*, Kahlo makes the audience feel the heartbreak she is going through by illustrating a broken heart, cut veins and change of wardrobe.
- In *The Broken Column*, Kahlo expresses her pain of hopelessness due to her accident.
- In *Diego and I*, Kahlo expresses the pain she undergoes day by day just by thinking about her lover, Diego Rivera.



Both of them express immense pain. They're paintings are all about pain.

“Frida Kahlo Paintings, Biography and Quotes.” Frida Kahlo Organization. <http://www.fridakahlo.org/>

## Roth

- In *Apocalyptic I*, Roth expresses the sadness the people who built and hold the city together by seeing it get destroyed.
- In *Apocalyptic II*, Roth expresses the burden the Statue of Liberty goes through because of this country's problems in environmental and political matters.
- In *City Girl 1*, Roth expresses the pain the young girl has by holding the roots of the city in her back.



Roth, Julie. *Julie Roth Illustration & Design*, [www.rothillustration.com/](http://www.rothillustration.com/).

# Links

Roth, Julie. *Julie Roth Illustration & Design*, [www.rothillustration.com/](http://www.rothillustration.com/).

“Frida Kahlo Paintings, Biography and Quotes.” Frida Kahlo Organization. <http://www.fridakahlo.org/>

Kettenmann, Andrea. *Frida Kahlo: Pain and Passion*. Los Angeles: Taschen, 2008.

Levine, Barbara, and Stephen Jaycox. *Finding Frida Kahlo: an unexpected archive*. New York: Princeton Architectural Press, 2009.

Morrison, John. *The Great Hispanic Heritage: Frida Kahlo*. New York: Chelsea House, 2003.

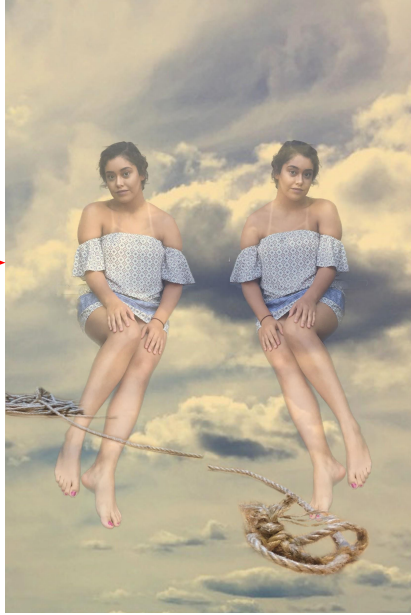
Pérez Alonso, Leticia. "Frida Kahlo and the Improper/Unclean: Toward the Condition of Abjection." *Women's Studies* 43, no. 4 (May 2014): 407-424. *Academic Search Premier*, EBSCOhost (accessed January 11, 2017).

Reis, Levilson C. "Paratexts to Frida Kahlo's Oeuvre: The Relationship between the Visual and the Textual, the Self and the Other, from the Self-Portraits to the Diary Entries." *Forum For Modern Language Studies* 48, no. 1 (January 2012): 99-111. *Academic Search Premier*, EBSCOhost (accessed January 11, 2017).

“The Life and Times of Frida Kahlo.” PBS Organization. <http://www.pbs.org/weta/fridakahlo/life/>

# Formal Introduction to Own Works

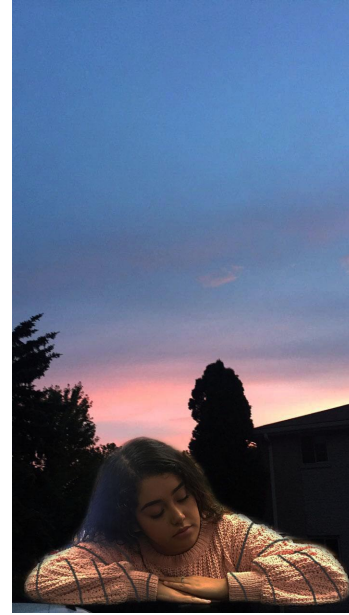
This piece focuses on portraying a similar piece of Frida Kahlo; it's known as *The Two Fridas*. That piece expresses Frida's two different personalities. One is the traditional Frida and the other is an independent, modern Frida. The *Two Leslie's* is a piece of great significance because it means that she is stuck between two cultures; the one she was born into and one she grew up into. She is the same person in both, but is different at the same time.



The Two Leslie's by Me



What My Family Gave Me by Me



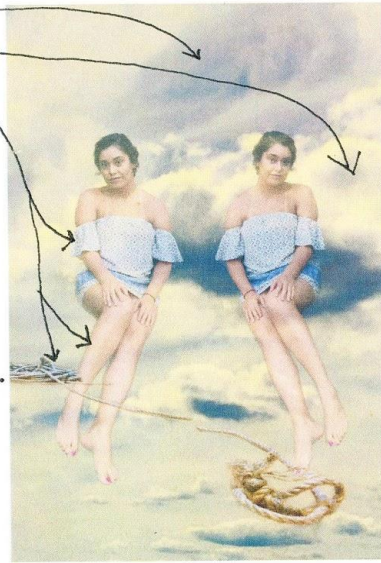
Milwaukee Girl by Me

This piece represents the life of a girl who lives in Milwaukee. This digital collage makes it appear as if the young girl is carrying the city, her surroundings, or her home on her back. In addition, there are roots on her body that symbolize suffocation and strain from two cultures; trying to fit in and realizing that it is okay to be different.

*What My Family Gave Me* is a visual representation of who I am and what makes me who I am. It is called *What My Family Gave Me* because it was inspired by Frida Kahlo's, *What The Water Gave Me*. In the painting there is my legs in a bathtub and within the water there are my parents, brother, my dog, a fire and a tent. They all represent different things, especially on which side they are placed.

# Comparing and Contrasting Own Artistic Styles and Use of Emotion to Frida Kahlo

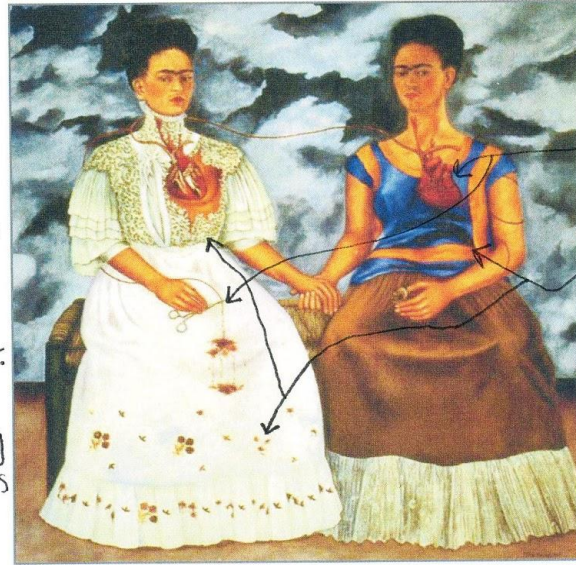
- Contrast between grey, white, blue and brown.
- Intended to represent how different I am in my Mexican culture compared to my American culture.
- Very Personal because this emotion is expressed and felt everyday.



The Two Leslie's

## Both

- Detailed face features.
- Has two figures as main focal point.
- Same positioning
- Expressions can be easily interpreted.
- Audience may relate.

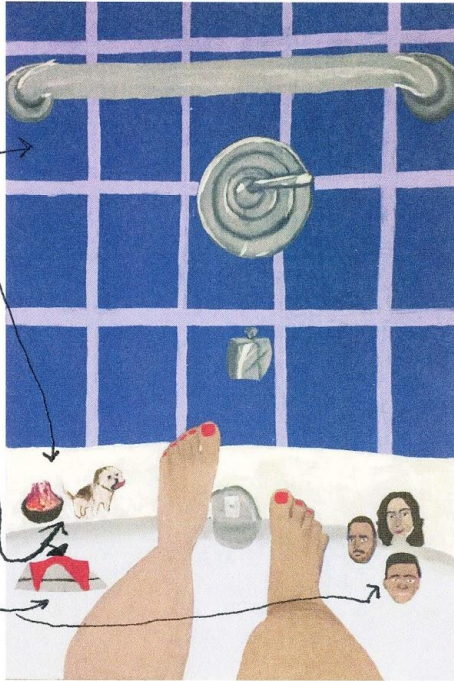


The Two Fridas

- Lots of hidden meanings with the hearts and scissors.
- Detailed dresses, hearts and blood.
- Intended to represent ~~the~~ heartbreak after the pain.
- Kahlo shows the audience how she cut the cords of love tied between Rivera.

# Comparing and Contrasting Own Artistic Styles and Use of Emotion to Frida Kahlo

- Has a few, detailed focal points.
- Large contrast between purple and white.
- Intended to represent what my family gave me, which was happiness.
- limited color scheme
- Expresses gratitude



What My Family Gave Me

## Both

- Similar leg positioning
- Audience may relate.
- Very realistic
- lines create distortion
- perspective style
- share idea of bathing



What the Water Gave Me

- Has many focal, detailed points.
- Some contrast between green and white.
- Intended to represent all the events that occurred in her life that may have caused happiness or pain in Kahlo's life.

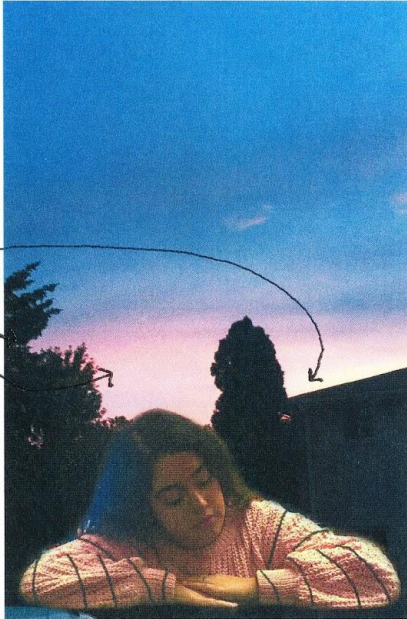
# Comparing and Contrasting Own Artistic Styles and Use of Emotion to Julie Roth

• There is a huge contrast between the colors blue, pink, white and black.

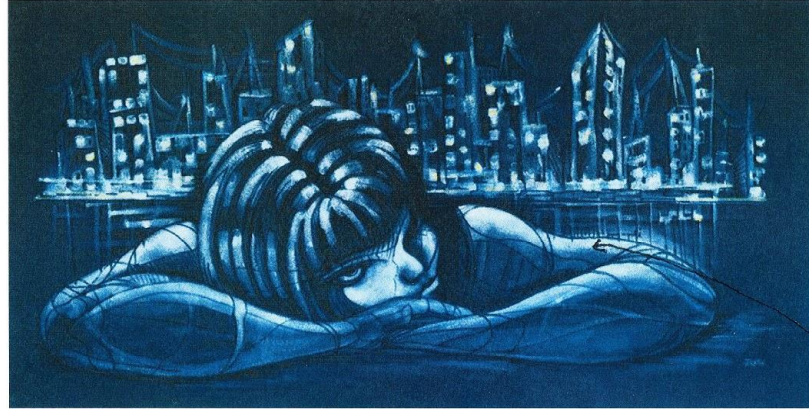
• Positive space is mostly on the bottom.

• Has more of a variety of colors.

• Targets audiences that they all are a boy, girl or what they identify as and that they all belong somewhere; in Milwaukee.



Milwaukee Girl



City Girl 1

• Intended to represent the pressure of a girl who lives in any city.

• Very personal to Roth because she used to live in a city.

- Uses bold and thin lines.
- Hollow face features
- Background buildings are detailed.

## BOTH

- Has one figure as a focal point.
- Detailed focal point
- Expressions can be easily interpreted.
- Audiences from the city may relate.

# Reflection

Throughout the comparative study, I have learned to think and view things with a new perspective which is basically the way IB taught all of the students in the program. I have developed this skill due to the process of the making of my art, especially those three pieces that were inspired by Frida Kahlo and Julie Roth. The International Baccalaureate Program has shaped me into the person I am today, due to the way I learn things now. I learned that the way IB teaches is a lot more in depth than any other learning program, it is the best.

For *The Two Leslie's*, I learned that you have to be very patient with photoshop because if you don't, you will mess up and it's really hard to go back to how the image used to be. I also learned how to use photoshop and its techniques for future projects, analysis and references. It was hard but worth the learning. I also learned that it's okay to ask for help, because sometimes you just need a little help and more for me due to it being my first time using photoshop. I feel very successful with my result. It came out very different to my original sketches and that's okay because in my opinion I modified it for the better. I really enjoyed this project.

For *What My Family Gave me*, this project was pretty intense from the rest of the projects because I finished the painting in a course of two complete days and was under a lot of pressure due to me being full IB. However, it was a success because I made my point across and it was able to show my inspiration and development through my painting. I think one of the most difficult challenges I had to get through was time management, last year it was more calm, but this year, it's only been a month and a half and I have been the most stressed I have ever been in my life and that isn't including the fact that my extended family is staying with us for a while to live, so the environment is pretty hectic. Other challenges were developing the hues and the right tone, creating highlights and shadows too. Since we came back from summer break, my painting has been very rusty but with more practice, it will be back. Overall it was challenging, but a good experience nonetheless.

For *Milwaukee Girl*, the project was successful. It was my last project for Reagan and in a way, I felt somewhat proud that I was able to tie it back to the beginning. Like Teddy said, "You have to go back to the beginning to understand the end." This project was like the end of my high school career, but the beginning of something else. This project gave me closure. Overall, this project was excellent because I was able to tie everything that Julie Roth did on her painting on City Girl 1. Obviously, she did it on a painting and I did it on a digital collage, and they have different meanings but they're the same because my project was inspired by her. In the end, I think I did a good job imitating her work in a different style and with different meanings.