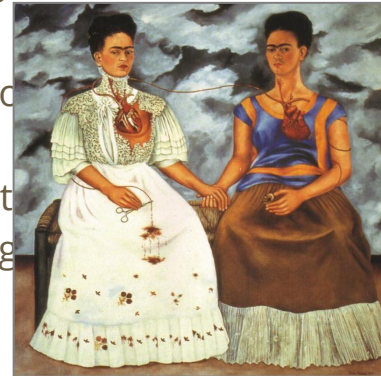
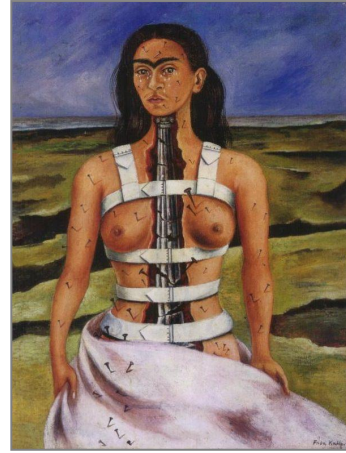

Comparative Study

— By: Leslie Sandoval —

This study focuses on analyzing and comparing two different artists and a total of four different artworks. These artists and their works have similar intentions in portraying what they express; I will also be comparing and contrasting my artwork with the artwork of Julie Roth and Frida Kahlo. I will be comparing *The Two Fridas*, *The Broken Column* and *Diego and I* by Frida Kahlo with *Apocalyptica I*, *Apocalyptica II*, *City Girl 1* by Julie Roth and my artwork. Nearing to the end of the IB Visual Arts Program, I have learned that most artwork is conceptual, meaning that the idea of the artworks is more important than the paintings itself.

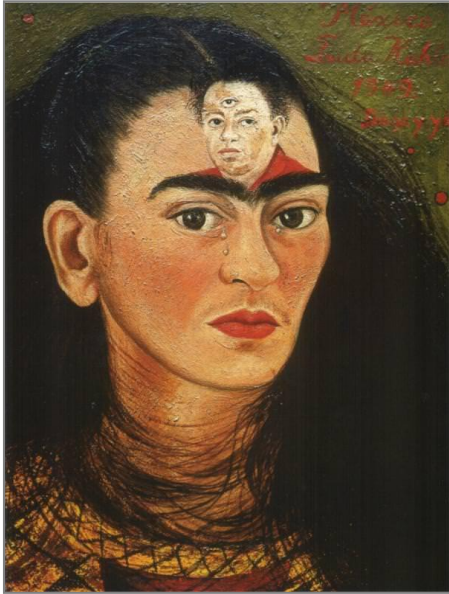
Evaluation of Cultural Significance of Kahlo

Frida Kahlo is a famous Mexican artist known world wide. Kahlo's calling began in the late 1920's. She started her art profession because of her tragic accident in a bus ride home that fractured most of her body. According to John Morrison, "As horrible as the accident was, it induced Frida to start painting as a form of therapy. Her mother rigged up a mirror on Frida's four-poster bed so she could paint while laying down." Therefore, that statement provides evidence that Frida Kahlo's work occurred due to her disability after the accident. Her art mostly features realism and surrealism of sequenced events of her life, that includes her passionate and dysfunctional relationship with the famous mural artist, Diego Rivera in which he is portrayed in most of her art. Kahlo expressed the pain that she endured throughout her life, and that includes the traumas that led to her emotional and physical pain. Frida Kahlo created a major impact in the Surrealist Movement since she is an exemplary figure that provided work during the movement and hit all the check marks, such as the work deriving from the imagination and it being humanely unrealistic.



Evaluation of Cultural Significance of Kahlo

Frida Kahlo met Diego Rivera at a really young age. The first time Kahlo laid eyes on Rivera was at her school, and she had a huge crush on him but would constantly make fun of him. After school ended for her, she never saw him again until after the bus accident and her aspiration to make art began. Kahlo found Rivera and showed him her work and wanted to see what he thought about it, since he was a famous mural artist. This led to the relationship that Rivera and Kahlo would have. Rivera was a lot older but they made their relationship work and soon got married. Rivera cheated on Kahlo frequently, and she knew about all of his affairs. Instead of Kahlo being sad, she would take advantage of that and cheat on him as well. This complicated relationship with no boundaries led Rivera to sleep with Frida's sister. Frida put up with all of his affairs, but she couldn't with this one and left him. However, the divorce only lasted a year because she married him again a year later after the divorce. They lived happily after that. However, it was in that year when Kahlo was divorced that she created her most famous and adored paintings. In conclusion, Rivera and the pain he inflicted to Kahlo through cheating, rumors, priorities and miscommunication was the inspiration Kahlo had to make most of her art that is now famous world wide.



Interpretation of Function and Purpose

Annotation of *The Two Fridas* by Frida Kahlo

The hearts are surrealistic and symbolic, depicting her heartbreak. The hearts are connected because there are two different Frida's, the one that she used to be for Diego and the one she is now without him. Frida has scissors because the new her, is breaking the ties with her old self that used to put Rivera first for everything.

The white in Mexican culture symbolizes purity. This makes her traditional clothing stand out, so she can almost be at the same level as Rivera was when his art was famous and hers wasn't.



“Frida Kahlo Paintings, Biography and Quotes.” Frida Kahlo Organization. <http://www.fridakahlo.org/>

Kahlo creates a dark background that contrasts with the vivid colors in her clothing and on herself.

She wears clothes that a woman in México would wear in a daily basis. She uses this type of garment to show her humility and the real Kahlo without a Rivera.

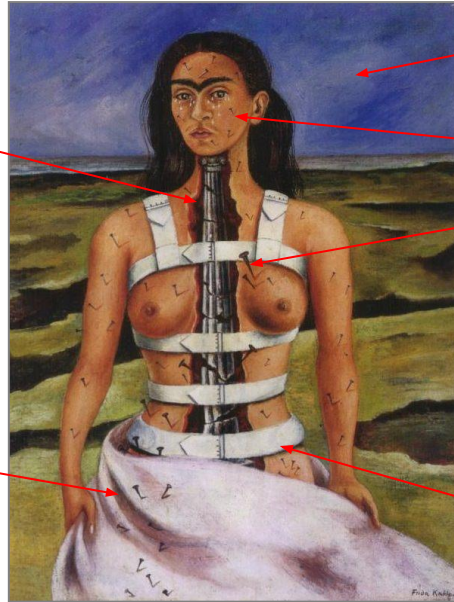
Her dress is a light brown that decreases its center of attention with a blue and orange blouse that stands out, just enough.

Interpretation of Function and Purpose

Annotation of *The Broken Column* by Frida Kahlo

Her spinal cord is depicted as a broken column, since her accident damaged her spinal cord. After the accident, Kahlo had to use a body cast for months.

Kahlo paints a garment over her, creating contrast over her skin tone and background.



Kahlo creates a dark, blue background that contrasts with her self-portrait. It is believed she did this because blue often represents sadness. In the image of herself, she is crying and has nails everywhere; they represent the nails that would hold the body cast together.

The white bandages on her body are the cast that she had all over the body. The white bandages contrast all the colors over her body and background.

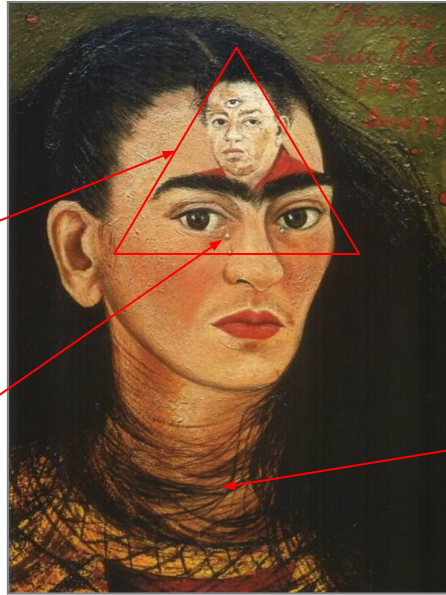
“Frida Kahlo Paintings, Biography and Quotes.” Frida Kahlo Organization. <http://www.fridakahlo.org/>

Interpretation of Function and Purpose

Annotation of *Diego and I* by Frida Kahlo

The face of Diego Rivera on Kahlo's forehead has major significance because that was all she thought about, Rivera. Also, she created a pyramid of five eyes, it can possibly refer to a love triangle between them two and their lovers in their affairs.

The tear symbolizes the pain Rivera causes just by thinking about him, that is why she placed him on her forehead.



It says, "México, Frida Kahlo, 1949, Diego y yo." Kahlo most of the time wrote on her paintings with phrases or the title and date.

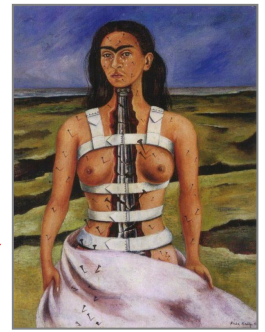
Her hair around her neck, symbolizes that the pain without Diego is like a tightness or pressure around her neck that can lead to suffocation.

"Frida Kahlo Paintings, Biography and Quotes." Frida Kahlo Organization. <http://www.fridakahlo.org/>

Analysis of Formal Qualities of Kahlo

Kahlo's use of symbolism and surrealism creates a powerful message on what she has experienced and lived through. The accident, the betrayal and the trauma created a big impact on her art.

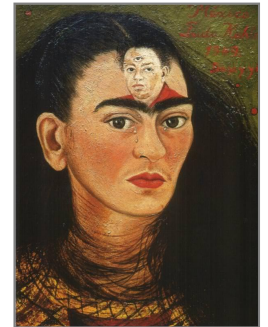
In Frida Kahlo's, *The Broken Column* she illustrates the pain she went through and how the bus accident impacted her and her entire life. *The Broken Column* not only illustrates pain, but it illustrates the way she grieved, and how the body cast and nails held her body together from rupturing. It also shows how the cast and nails kept her together and how it gave her a reason to want to live.



In Frida Kahlo's, *The Two Fridas* she illustrates heartbreak and surrealism. Kahlo demonstrates how much pain she was in, but even then she knew herself worth, so she made the broken hearted Frida that was in love with Rivera and would do anything for him cut the cords, while the new Frida just held the pain in with a new, healthy heart.



In Frida Kahlo's, *Diego and I* Frida Kahlo illustrates heartbreak, surrealism and headache. This painting demonstrates how Diego Rivera is always on her mind, and how much the thought of him hurts her. In conclusion, Kahlo shows many formal qualities by easily demonstrating the movement she was inspired by, the meaning and components of the pieces.

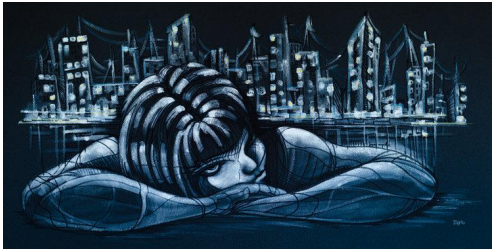


Evaluation of Cultural Significance of Julie Roth

In Julie Roth's website, she stated that she is a professional freelance illustrator and graduate from the Milwaukee Institute of Art & Design (MIAD), how she utilizes a few artistic disciplines with utilizing traditional 2D media such as oil, ink, and watercolor.

On her biography, she wrote that she was born in Milwaukee, WI. She let the public know that she is inspired by nature, the city and the dichotomy of man's persistent influence on the world. Roth's passion lies in creating visionaries by combining the human form, architecture, and landscapes to produce a basic statement about the impacts of our

decisions.



Interpretation of Function and Purpose

Annotation of *Apocalyptica I* by Julie Roth

The metallic people symbolize the people in today's world function and how they work like robots.

The water symbolizes droughts, global warming and the natural disasters that will and have occurred in the world.



The building is a corporation that manufactures products, but harms the environment by polluting the air and water.

Metallic people are holding up the bridge, symbolizing them as the backbone of the city.

The colors of the water shows contamination.

Roth, Julie. *Julie Roth Illustration & Design*, www.rothillustration.com/.

Interpretation of Function and Purpose

Annotation of *Apocalyptica II* by Julie Roth

The water wheel connects to the problems she has and the ones from all around the city.

Her face is down, symbolizing pain. The pain comes from the problems of the city and her own problems are affected by it.



Roth, Julie. *Julie Roth Illustration & Design*, www.rothillustration.com/.

This symbolizes a devastation in ruins. This can be global warming, the devastation of the twin towers and personal problems that are affected by all of that.

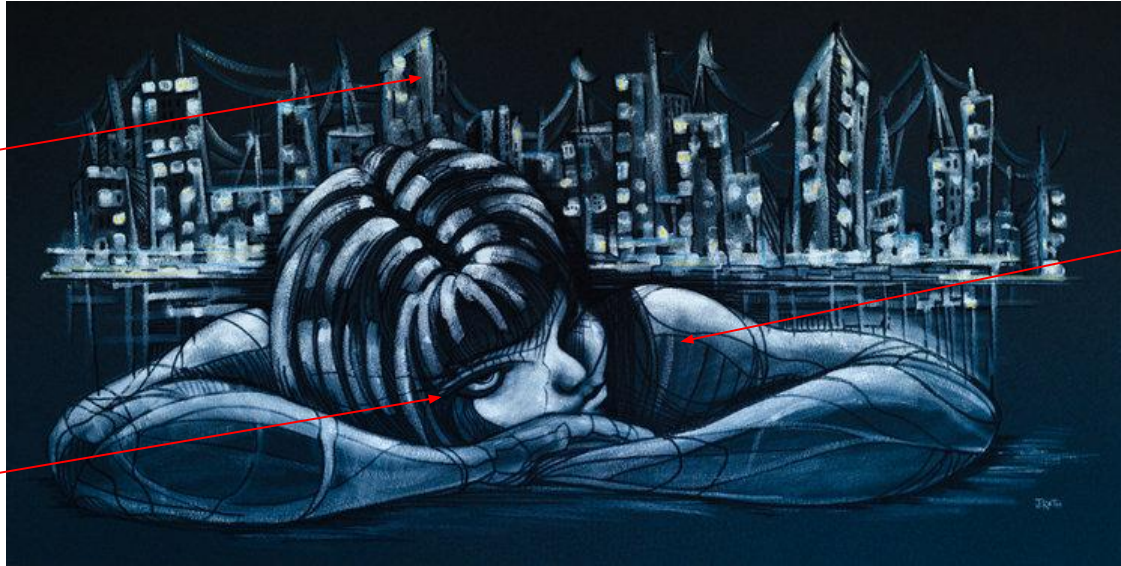
Her body shows a lot of pressure and pain on her head, back and shoulders from the weight of the city, since she is representing herself as the Statue of Liberty.

Interpretation of Function and Purpose

Annotation of *City Girl 1* by Julie Roth

The buildings are all connected symbolizing unity.

Her eyes are dark and looking into space depicting her thoughts.



There is hair, roots and injuries on her body symbolizing suffocation and the pressure of being a girl from the city.

Roth, Julie. *Julie Roth Illustration & Design*, www.rothillustration.com/.

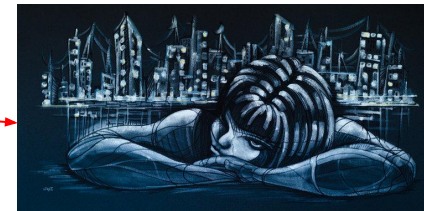
Analysis of Formal Qualities of Roth

Roth's use of symbolism creates powerful messages that are about her person, and the problems of the city and of America.

In *Apocalyptic I*, Roth uses humans appear as robots by depicting the pain they undergo by seeing and building the country but also seeing it fall apart due to war, natural disasters and destruction.

In *Apocalyptic II*, Roth paints a woman who represents the Statue of Liberty. The woman is carrying the burden of the city and the country. It depicts how having a lot of responsibility brings pain.

In *City Girl 1*, Roth makes the painting appear as if the young girl is carrying the city on her back. The hair, injuries and roots on her body are tied and are all around her body, suffocating her.



Comparing Artistic Style

Looking at a certain point, same gaze

Large amount of contrast in color The Two Fridas has more color variety, while Diego and I has less.

More detail in background, clothing, face, hearts, etc.



The Two Fridas by Frida Kahlo

Cutting ties between herself, the one who loved Diego Rivera.

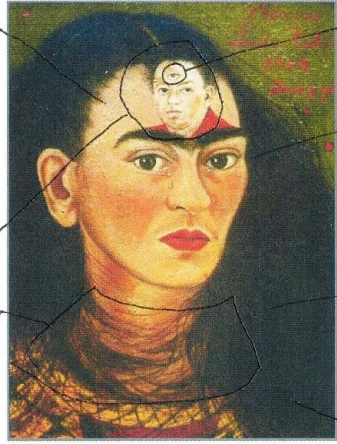
Both have TENSION

There are hidden meanings in both paintings.

Both are about Rivera

Both paintings are very surreal and unrealistic.

UNITY



Diego and I by Frida Kahlo

Third eye

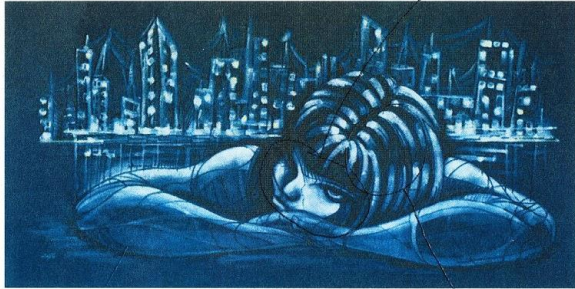
Only detail, is in her face and in Diego Rivera.

Suffocation, strangulation

Alone with her thoughts

Comparing Artistic Style

has less of a variety of colors
• Blue tones of color



Realistic

City Girl 1

Body position

focuses on reality and emotions

Gaze

- Panoramas
- City is a great focus for both painting
- Has a sort of body of water.

Large, thick strokes

Both are about society and world issues.

Unrealistic



Gaze

more variety of colors
• Grey tones of colors

Apocalyptica I by Julie Roth

Thin strokes

influenced by MC Escher, Salvador Dali and Hieronymous Bosch

Has a stronger hidden meaning

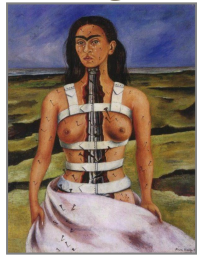
This painting is a lot more detailed, for the people, city, and bridge

Comparing Use of Emotion

Kahlo

- In *The Two Fridas*, Kahlo makes the audience feel the heartbreak she is going through by illustrating a broken heart, cut veins and change of wardrobe.
- In *The Broken Column*, Kahlo expresses her pain of hopelessness due to her accident.
- In *Diego and I*, Kahlo expresses the pain she undergoes day by day just by thinking about her lover, Diego Rivera.

Both of them express immense pain. Their paintings are all about that feeling and expression.



“Frida Kahlo Paintings, Biography and Quotes.” Frida Kahlo Organization. <http://www.fridakahlo.org/>

Roth

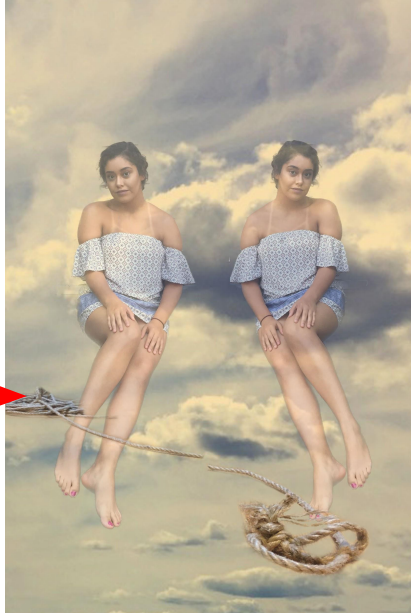
- In *Apocalyptic I*, Roth expresses the sadness of the people who built and held the city together by seeing it fall apart.
- In *Apocalyptic II*, Roth expresses the burden the Statue of Liberty goes through because of the problems of America and its environmental and political matters.
- In *City Girl 1*, Roth expresses the pain the young girl has because of the roots, hair and injuries of the city.



Roth, Julie. *Julie Roth Illustration & Design*, www.rothillustration.com/.

Formal Introduction to Own Works

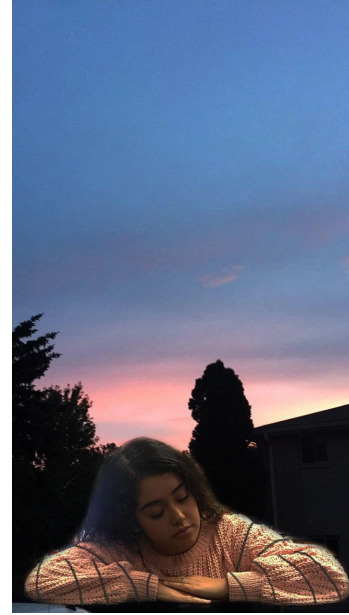
This piece focuses on portraying a similar piece of Frida Kahlo; it's known as *The Two Fridas*. That piece expresses Frida's two different personalities. One is the traditional Frida and the other is an independent, modern Frida. *The Two Leslie's* is a piece of great significance because it means that she is stuck between two cultures; the one she was born into and one she grew up into. She is the same person in both, but is different at the same time.



The Two Leslie's by Me



What My Family Gave Me by Me



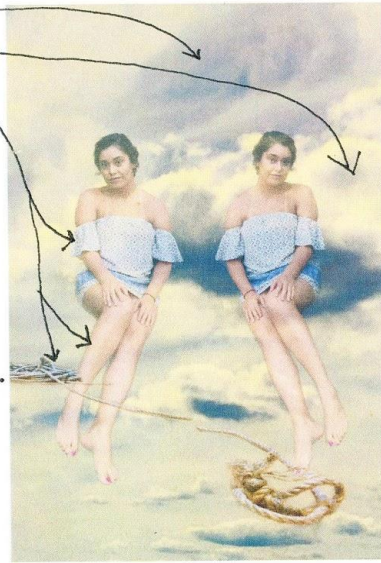
Milwaukee Girl by Me

This piece represents the life of a girl who lives in Milwaukee. This digital collage makes it appear as if the young girl is carrying the city, her surroundings, or her home on her back. In addition, there are roots on her body that symbolize suffocation and strain from two cultures; trying to fit in and realizing that it is okay to be different.

What My Family Gave Me is a visual representation of who I am and what makes me who I am. It is called *What My Family Gave Me* because it was inspired by Frida Kahlo's, *What The Water Gave Me*. In the painting there is my legs in a bathtub and within the water there are my parents, brother, my dog, a fire and a tent. They all represent different things, especially on which side they are placed.

Comparing and Contrasting Own Artistic Styles and Use of Emotion to Frida Kahlo

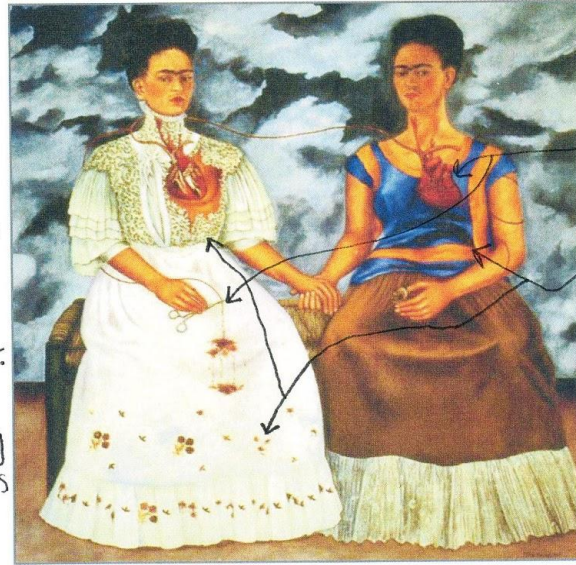
- Contrast between grey, white, blue and brown.
- Intended to represent how different I am in my Mexican culture compared to my American culture.
- Very Personal because this emotion is expressed and felt everyday.



The Two Leslie's

Both

- Detailed face features.
- Has two figures as main focal point.
- Same positioning
- Expressions can be easily interpreted.
- Audience may relate.

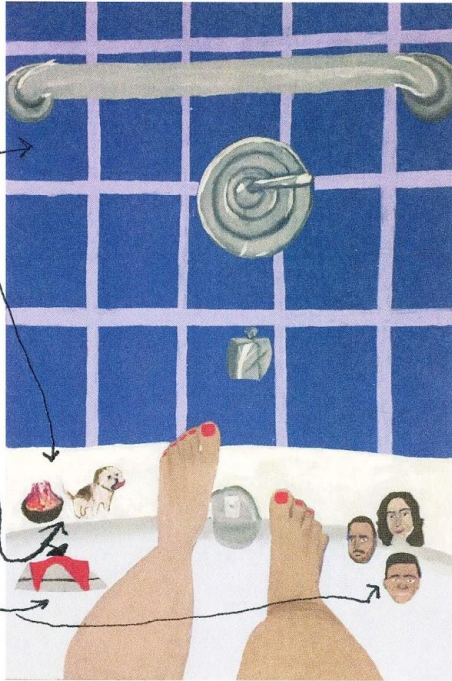


The Two Fridas

- Lots of hidden meanings with the hearts and scissors.
- Detailed dresses, hearts and blood.
- Intended to represent ~~the~~ heartbreak after the pain.
- Kahlo shows the audience how she cut the cords of love tied between Rivera.

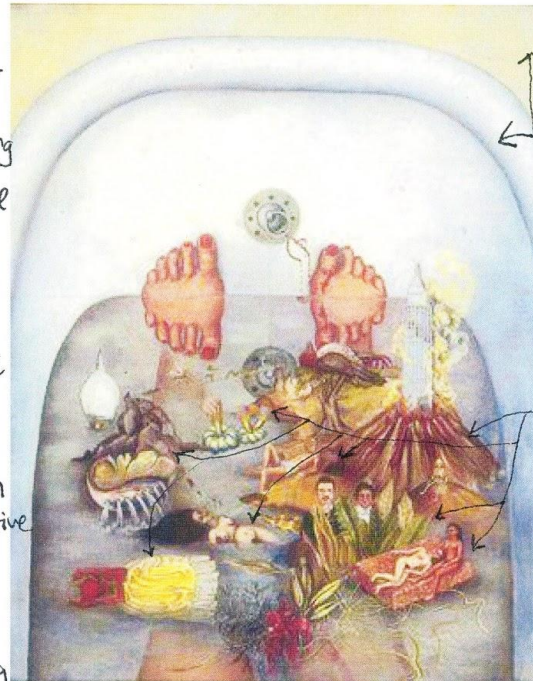
Comparing and Contrasting Own Artistic Styles and Use of Emotion to Frida Kahlo

- Has a few, detailed focal points.
- Large contrast between purple and white.
- Intended to represent what my family gave me, which was happiness.
- limited color scheme
- Expresses gratitude



What My Family Gave Me

- Both
- similar leg positioning
 - Audience may relate.
 - Very realistic
 - lines create distortion
 - perspective style
 - share idea of bathing



What the Water Gave Me

- Has many focal, detailed points.
- Some contrast between green and white.
- Intended to represent all the events that occurred in her life that may have caused happiness or pain in Kahlo's life.

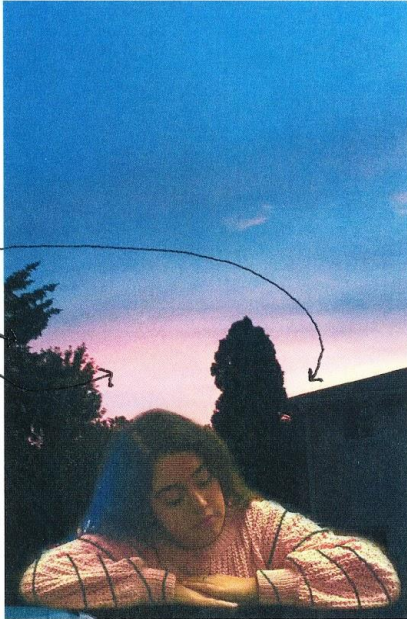
Comparing and Contrasting Own Artistic Styles and Use of Emotion to Julie Roth

• There is a huge contrast between the colors blue, pink, white and black.

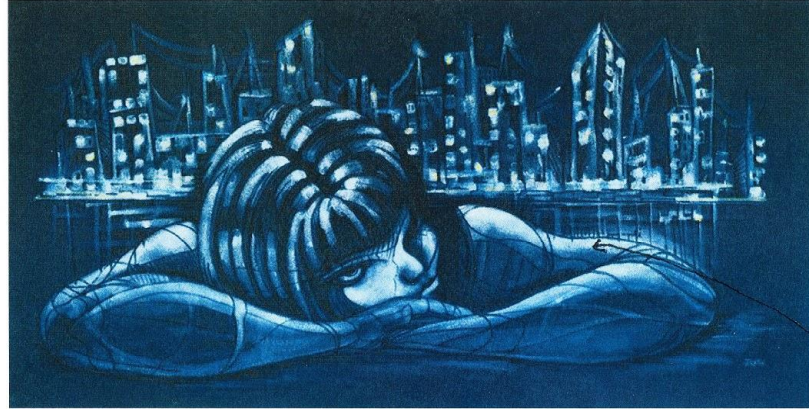
• Positive space is mostly on the bottom.

• Has more of a variety of colors.

• Targets audiences that they all are a boy, girl or what they identify as and that they all belong somewhere in Milwaukee.



Milwaukee Girl



City Girl 1

• Intended to represent the pressure of a girl who lives in any city.

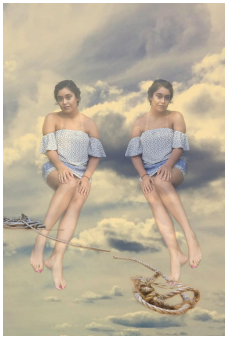
• Very personal to Roth because she used to live in a city.

- Uses bold and thin lines.
- Hollow face features
- Background buildings are detailed.

BOTH

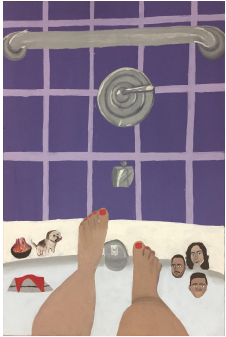
- Has one figure as a focal point.
- Detailed focal point
- Expressions can be easily interpreted.
- Audiences from the city may relate.

Reflection

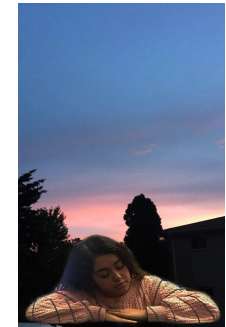


Throughout the comparative study, I have learned to think and view things with a new perspective which is basically the way IB taught all of the students in the program. I have developed this skill due to the process of the making of my art, especially those three pieces that were inspired by Frida Kahlo and Julie Roth. The International Baccalaureate Program has shaped me into the person I am today, due to the way I learn things now. I learned that the way IB teaches is a lot more in depth than any other learning program, it is the best.

For *The Two Leslie's*, I learned that you have to be very patient with photoshop because if you don't, you will mess up and it's really hard to go back to how the image used to be. I also learned how to use photoshop and its techniques for future projects, analysis and references. It was hard but worth the learning. I also learned that it's okay to ask for help, because sometimes you just need a little help and more for me due to it being my first time using photoshop. I feel very successful with my result. It came out very different to my original sketches and that's okay because in my opinion I modified it for the better. I really enjoyed this project.



For *What My Family Gave me*, this project was pretty intense from the rest of the projects because I finished the painting in a course of two complete days and was under a lot of pressure due to me being full IB. However, it was a success because I made my point across and it was able to show my inspiration and development through my painting. I think one of the most difficult challenges I had to get through was time management, last year it was more calm, but this year, it's only been a month and a half and I have been the most stressed I have ever been in my life and that isn't including the fact that my extended family is staying with us for a while to live, so the environment is pretty hectic. Other challenges were developing the hues and the right tone, creating highlights and shadows too. Since we came back from summer break, my painting has been very rusty but with more practice, it will be back. Overall it was challenging, but a good experience nonetheless.



For *Milwaukee Girl*, the project was successful. It was my last project for Reagan and in a way, I felt somewhat proud that I was able to tie it back to the beginning. Like Teddy said, "You have to go back to the beginning to understand the end." This project was like the end of my high school career, but the beginning of something else. This project gave me closure. Overall, this project was excellent because I was able to tie everything that Julie Roth did on her painting on City Girl 1. Obviously, she did it on a painting and I did it on a digital collage, and they have different meanings but they're the same because my project was inspired by her. In the end, I think I did a good job imitating her work in a different style and with different meanings. The research outcomes of this project were outstanding since I was able to dissect a lot of connections and information from paintings and their lives. The cultural context helped a lot to give a brief background on the artistic inspiration. The formal qualities were the qualities in the artwork of the artist and the artist itself. The function and purpose is self explanatory, and describes why the artist did what they did. Materials, conceptual meanings and cultural significance were also included in my work and in my artistic inspirations work.